

# Technical Sheet

**AFRICA JADE THALASSO HOTEL**





---

Africa Jade Thalasso Hotel is located in the village of Korba, in the heart of Cap Bon, 15 km from the city of Nabeul and 25 km from Hammamet. Historical sites, such as the Kélibia Fortress and Kerkouane, are also nearby. Tunis Airport is 90 km away, while Monastir Airport is 140 km away.

## TECHNICAL DATA SHEET

**Hotel Name:** *Africajade Thalasso*

**Category:** 4 stars

**Address:** Av. Habib Bourguiba - 8070 Korba

**Phone:** +216 72 384 633

**Fax:** +216 72 385 353

**Hotel Email:** africajade@africajade.com.tn

**Reservation Email:** reservation@africajade.com.tn

**Commercial Department:**

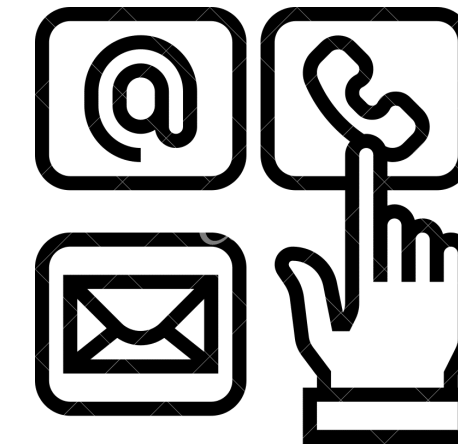
**Phone:** +216 20 436 184

**Email:** commercial@africajade.com.tn / assistantecommerciale@africajade.com.tn

**Languages spoken at the hotel:** Arabic, English, French, German, Italian

**Meal plans:** Bed & Breakfast (BB) / Half Board (HB) / Full Board (FB) / All Inclusive (specific description)

**Last renovation:** Partial renovation in 2019



# *Customer Services*



Luggage Storage

Fitness center

24/24 Reception

Car Parking

Meeting Rooms

Kids club

Laundry and Dry Cleaning Service

Outdoor pool and indoor seawater pool

Sun Loungers and Umbrellas

Private Beach of the Hotel

Wi-Fi available throughout the hotel, including all rooms

## Accommodation:

The Africajade Thalasso Hotel offers 257 rooms, including 121 double rooms, 116 rooms with a third bed, 11 family rooms, 2 senior suites, and 7 junior suites. The rooms are equipped with a telephone line, a safe, free Wi-Fi access, satellite TV, a mini bar (consumables at an additional charge), a hairdryer, individual air conditioning or heating, a bathroom with a bathtub, sink, magnifying mirror, welcome products, and a private balcony or loggia.



### **STANDARD DOUBLE ROOM**

The double rooms range from 25 to 32 m<sup>2</sup> and are equipped with double beds or large beds.

**Number: 121**

**Size: 32 m<sup>2</sup>**

**Occupancy: Minimum 1 person / Maximum 2 persons**

**View: Garden / Pool / Sea**



### ***SUPERIOR TRIPLE ROOM***

The triple rooms have an area of 35 m<sup>2</sup> and are equipped with double beds or large beds plus an extra bed for the third person.

Number: 116

Size: 35 m<sup>2</sup>

Occupancy: Minimum 2 persons /  
Maximum 3 persons

View: Garden / Pool / Sea



### ***FAMILY ROOM***

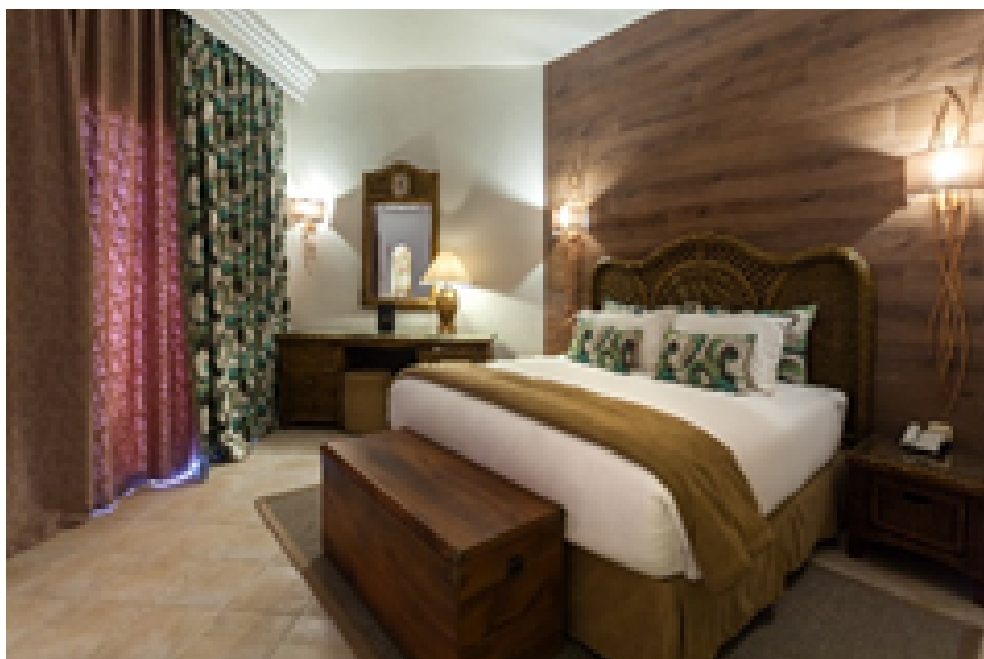
The family rooms have an area of 40 m<sup>2</sup> and are equipped with a double bed or a large bed plus two single beds

Number: 11

Size: 40 m<sup>2</sup>

Occupancy: Minimum 4 persons /  
Maximum 4 persons

View: Garden / Pool / Sea



### ***SUITES***

There are 9 suites in total, including 2 senior suites and 7 junior suites. They are equipped with double beds or large beds, plus a living room or a second bedroom.

Number: 09

Size: [To be filled in]

Occupancy: Minimum 2 persons / Maximum 4 persons

View: Garden / Pool / Sea

## ***Restaurant & Bars***

The hotel offers a wide culinary variety. Whether at the buffet or à la carte, we feature a selection of innovative dishes that blend Eastern and Western cuisines. We prioritize local cuisine that respects the quality of the ingredients.

Breakfast, lunch, and dinner are served daily at the central restaurant "Mandesa," where your taste buds will be delighted with menus presented in buffet style, show-cooking, or themed evenings.

<p><b>Restaurant "Mandesa"</b></p> <p>Is at your disposal every day from 07:00 to 10:00 / 12:30 to 14:30 (for ALL IN guests) / 19:00 to 22:00.</p>	<p>Number of Seats: 400  Meals: Breakfast, Lunch, Dinner  Opening: Open year-round</p>
<p><b>Restaurant "Le Coin Jade"</b></p> <p>Is at your disposal year-round.  Hours:  12:00 to 16:00 (October to April)  20:00 to 00:00 (year-round</p>	<p>Number of Seats: 50 indoors and 40 outdoors  Meals: Lunch, Dinner  Menu Type: À la carte  Opening: Open year-round</p>
<p><b>Restaurant "Snack"</b></p> <p>Hours: 12:30 to 17:00  This restaurant features a terrace overlooking Outdoor Pool Also open during the summer season.</p>	<p>Number of Seats: 60 indoors and 100 outdoors  Menu Type: À la carte  Opening: From May 15 to September 30</p>
<p><b>Restaurant "Beach Bar"</b></p> <p>Hours: 12:30 to 17:00  Our restaurant is located on the beach, where the staff will welcome you for your lunches and dinners, delighting your taste buds throughout your stay</p>	<p>Menu Type: À la carte  Opening: From May 15 to September 30</p>



### Central Bar

Hours: 09:00 to 00:00

The main bar, located at the hotel reception, welcomes you every day, year-round.

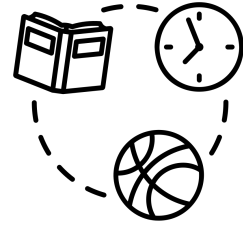
The pool bar and beach bar are operational from 08:00 to 00:00 during the period from May 15 to September 30

### Café Maure

Experience a different atmosphere while enjoying our mint tea and Turkish coffee. A variety of shisha is available at an additional charge. We welcome you from June 1 to September 30, from 16:00 to 00:00.



# Activities & Leisure



**A fitness center** is available for you, equipped with treadmills, exercise bikes, and free weights. An **outdoor pool** of 1,225 m<sup>2</sup> is also at your disposal from 10:00 to 19:00.

**The Thalassotherapy center** is open from 10:00 to 19:00 on weekdays and from 10:00 to 22:00 on Saturdays.

**The heated seawater pool** is accessible from 10:00 to 19:00.

A fully equipped **mini-club** is available for children aged 4 to 12 years, operating from 10:00 to 12:00 and 15:00 to 17:00.

**AMPHITHEATER:** Every evening, enjoy a different celebration and show presented by our entertainment team. From 21:00 to 21:30, there's a mini disco, followed by a show from 21:30 to 23:00 (sketches, lip-sync performances, musical comedies, dance shows, games without borders, etc.).

**Beach:** Enjoy a beautiful beach equipped with parasols and sun loungers. You can also take part in paid water activities such as jet skiing, banana boat rides, sea excursions, and more.

# Wellness



The Thalasso Center, inaugurated in 2008, spans an impressive area of 4,000 m<sup>2</sup> and has a daily capacity of 100 guests. Open seven days a week, it welcomes visitors from 9:00 AM to 12:30 PM and 2:00 PM to 6:30 PM.

The center features a reception area, a robe dressing room, a boutique, and two changing rooms for clients (male and female), along with a doctor's office for consultations.

In the Hydrotherapy area, you will find three affusion shower rooms, three whirlpool baths, and a jet shower room, complemented by two wrapping rooms with heated blankets, a scrubbing and body wrapping room, and a foot bath room. The oriental hammam offers both hot and warm zones, while additional rooms are available for scrubbing and body wrapping. Guests can also enjoy an indoor pool equipped with a jacuzzi, a phlebological pathway, and swan neck showers, as well as a sauna for relaxation.

The Dry Treatment area includes a pressotherapy room and a dry floating bed room. For those seeking massages, there are seven massage rooms, an Ayurvedic massage room, a shiatsu room, and two outdoor cabins with breathtaking sea views.

The Relaxation area features a soothing relaxation room and a cozy herbal tea room. Meanwhile, the Beauty and Fitness area offers an aesthetics room, a hair salon, and a fitness room to cater to all wellness needs.

The center proudly uses "THALGO" products, ensuring a high-quality experience. At the beginning of your stay, you will meet with the center's doctor for a medical consultation to create a personalized wellness program tailored to your needs.

All hydrotherapy treatments (whirlpool baths, affusion showers, seaweed or mud wraps, exfoliation) are 20 minutes long. The reflexo-relaxation and phlebological treatments are 25 minutes each, while massages (relaxing, lymphatic drainage, slimming, abhyanga, shiatsu) last for 50 minutes.

Please note that a medical consultation is mandatory and payable on-site, costing approximately €12. Guests undergoing treatments enjoy unlimited access to the hammam, sauna, indoor pool, and gym throughout their stay.

# ***Seminars & Meetings***

We manage every detail to allow you to fully enjoy your event.

We offer 2 seminar rooms, depending on your needs and desired layout.

We also provide technical equipment, catering services, and coffee breaks to enhance your meetings and ensure the comfort of your teams.

We handle every detail to ensure you can fully enjoy your event.





## **USEFUL INFORMATION**

Check-in: 2:00 PM

Check-out: 12:00 PM

A tourist tax of 12 DT per night per adult (from 12 years old) for a maximum duration of 7 nights is to be paid upon the guest's arrival.